



English

Your **MXANYWHERE2™**

Gesture button with Logitech Options software

By holding down the gesture button and moving the mouse, you can trigger 4 different navigation controls, optimised for the operating system you use.

Those gestures, and much more possibilities, are enabled by the Logitech Options software, available on:

www.logitech.com/download/MXAnywhere2

简体中文

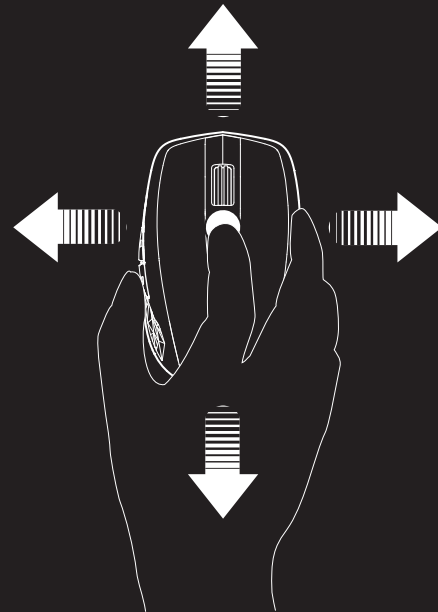
您的无线便携鼠标

使用 Logitech Options 软件启用手势按钮

按住手势按钮并移动鼠标，可以激活4个不同方向的导航控制，从而优化您使用的操作系统。

Logitech Options 软件可激活这些手势功能并开启更多其他功能，下载软件可以去以下链接：

www.logitech.com/download/MXAnywhere2

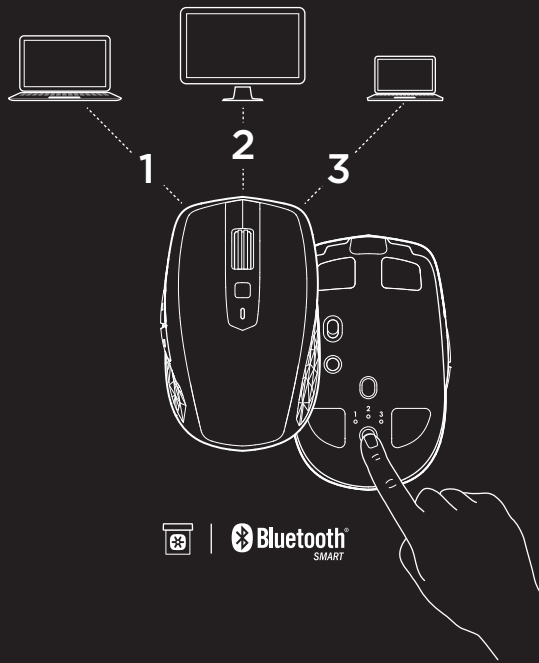
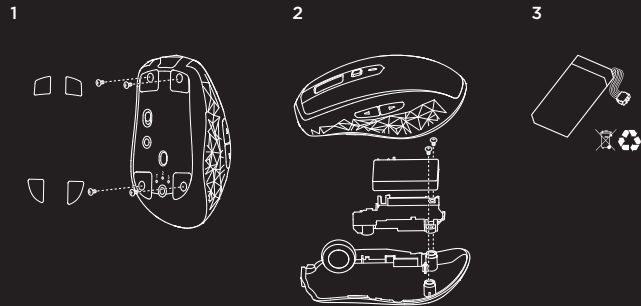


MXANYWHERE2™

WIRELESS MOBILE MOUSE | 无线便携鼠标

www.logitech.com/MXAnywhere2

Battery disposal | 电池弃置



English

Dual connectivity

Connect via included Logitech Unifying™ receiver or via Bluetooth® Smart.

Easy-Switch™

Pair up to 3 devices and easily switch between them with the press of a button.

简体中文

双重连接

通过随附的罗技® Unifying™ 接收器或蓝牙® 智能建立连接。

易于切换

最多可与 3 台设备配对，按下按钮可在装置间轻松切换。

www.logitech.com/MXAnywhere2

© 2015 Logitech. All rights reserved. Logitech, the Logitech logo, 罗技, and other Logitech marks are owned by Logitech and may be registered. All other trademarks are the property of their respective owners. Logitech assumes no responsibility for any errors that may appear in this manual. Information contained herein is subject to change without notice.

版权所有 © 2015 年罗技。罗技、罗技标志、Logitech 和其他罗技商标均归罗技所有，并或已注册。所有其它商标均是各自所有者的财产。罗技对于本手册中可能出现的任何错误不承担任何责任。本手册中包含的信息如有更改，恕不事先通知。

620-006546.003